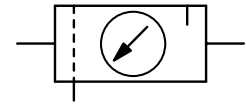


Description	Extremely robust FRL service unit made of brass.
Media	compressed air, non-corrosive gases or liquids
Supply pressure	max. 50 bar at CM2, max. 30 bar at CM3, optionally max. 50 bar (all without drain)
Adjustment	by black plastic knob at CM.-02, by T-handle with locknut at CM.-04
Gauge port	G¼ on both sides of the body, one screw plug supplied
Filter element	50 µm, optionally 5 µm, made of stainless steel
Bowl	stainless steel version without sight glass
Drainage	screw plug as standard, optionally manual drain (max. 30 bar) or automatic drain (max. 16 bar)
Temperature range	0 °C to 80 °C / 32 °F to 176 °F FKM 0 °C to 130 °C / 32 °F to 212 °F high temperature version for appropriately conditioned compressed air down to -20 °C / -4 °F
Material	Body: brass Bowl: stainless steel 316L / 1.4404 at G½ to G1, brass at G1½ and G2 Elastomer: FKM optionally EPDM Knob: plastic at sizes G¼, brass at G½ Inner valve: brass and plastic (not at option X54)



**G¼ and G½, max. 50 bar
-20 to 130 °C / -40 to 266 °F**

Dimensions			Combination consisting of	Bowl design made of	Flow rate		Connection thread G	Order number
A	B	C			m³/h*1	l/min*1		
mm	mm	mm						

FRL unit, 2-part

					P1: max. 50 bar, screw plug,	P2: 0.5...8 bar, relieving,	50 µm, with pressure gauge	CM2
138	220	123	BM+LM	stainless steel	51	850	G¼	CM2-02
168	247	127			138	2 300	G½	CM2-04



CM2-02H

FRL unit, 3-part

					P1: max. 30 bar, screw plug,	P2: 0.5...8 bar, relieving,	50 µm, with pressure gauge	CM3
212	173	129	FM+R120+LM	stainless steel	51	850	G¼	CM3-02
256	175	130			138	2 300	G½	CM3-04



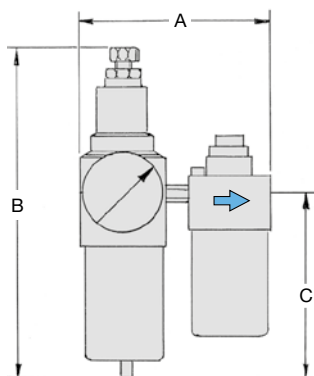
CM3-04H

Special options, add the appropriate letter

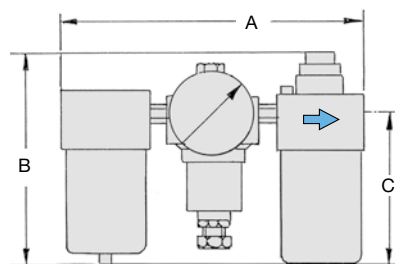
5 µm filter element		CM . . . G
0.2... 3 bar pressure range		CM . . . B
1 ...15 bar pressure range	P1 max. 50 bar	CM . . . D
manual drain	max. 30 bar	CM . . . H
automatic drain	made of stainless steel, max. 16 bar	CM . . . R
up to 130 °C / 266 °F	high temperature version	CM . . . X54
flange connection	see chapter for stainless steel devices / flanges	CM . . . F.

Accessories, enclosed

mounting bracket	made of stainless steel	for G¼	BW35-01S
mounting nut			M35x1,5S
mounting bracket	made of stainless steel	for G½	BW50-01S
mounting nut			M50x1,5S

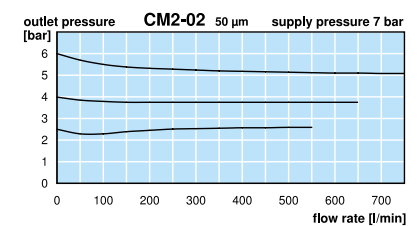
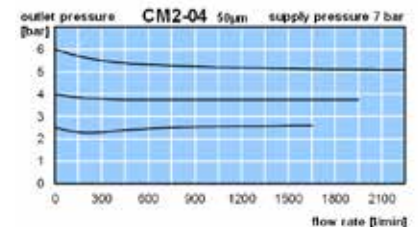


CM2-0..H



CM3-0..H

*1 at 7 bar supply pressure, 6 bar outlet pressure and 1 bar pressure drop



Further details: see chapter for single devices
Spare parts: see separate spare parts list

PDF CAD
www.aircom.net



Order example:
CM2-02